

Table of Contents

1. Introduction	3
2. Getting Started	3
3. Hardware Description	5
4. Firmware Update.....	7
<i>More Information</i>	9
<i>Important Notice for Richtek Reference Design</i>	9

1. Introduction

Nowadays, most of ICs contain digital interface in order to control increasingly complex ICs easily. Richtek Technology developed a bridge board to control the device with digital interface. The bridge board, Wrenboard, provides I²C and GPIO, which can be utilized as 1-wire/PWM. In addition, we also provide the PC-based software (Richtek Bridgeboard Utilities). Users can control the devices by graphical user interface (GUI). This user manual describes the hardware setting and how to update the firmware on the Wrenboard. For the information about software operation, please refer to “Bridgeboard Control Panel User Manual”.

2. Getting Started

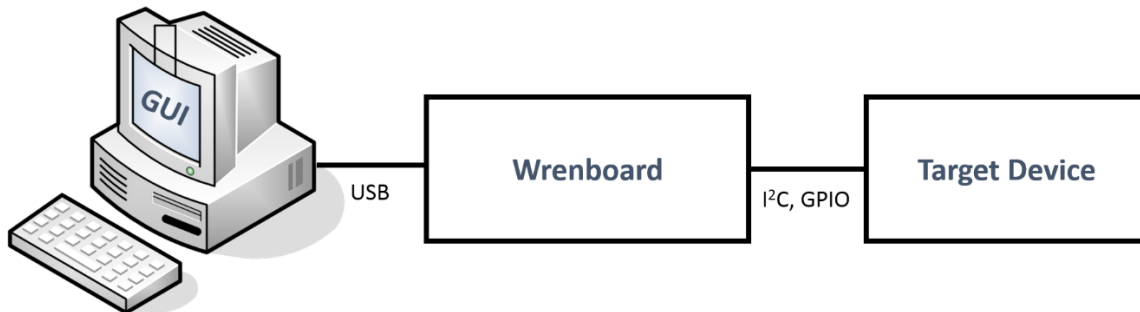


Figure 1. The Connection of Wrenboard

Figure 1. Summarizes the purpose of Wrenboard. This section describes how to install the required components.

2.1 System requirements

- ◆ Operating system: Windows XP, Windows 7, or Windows 8 / 8.1.

2.2 Software installation

Install Richtek Bridgeboard Utilities downloaded from

<http://www.richtek.com/shareEVB/RTBridgeboardUtilitiesV133.exe>

2.3 Hardware installation

1. Connect Wrenboard and target device via connect cable.
2. Insert Wrenboard into a USB port.

2.4 Graphical User Interface

After software and hardware installation, you can run Richtek Bridgeboard Control Panel to control the target device by GUI (Figure 2). For details regarding the operation, please refer to “Bridgeboard Control Panel User Manual”.

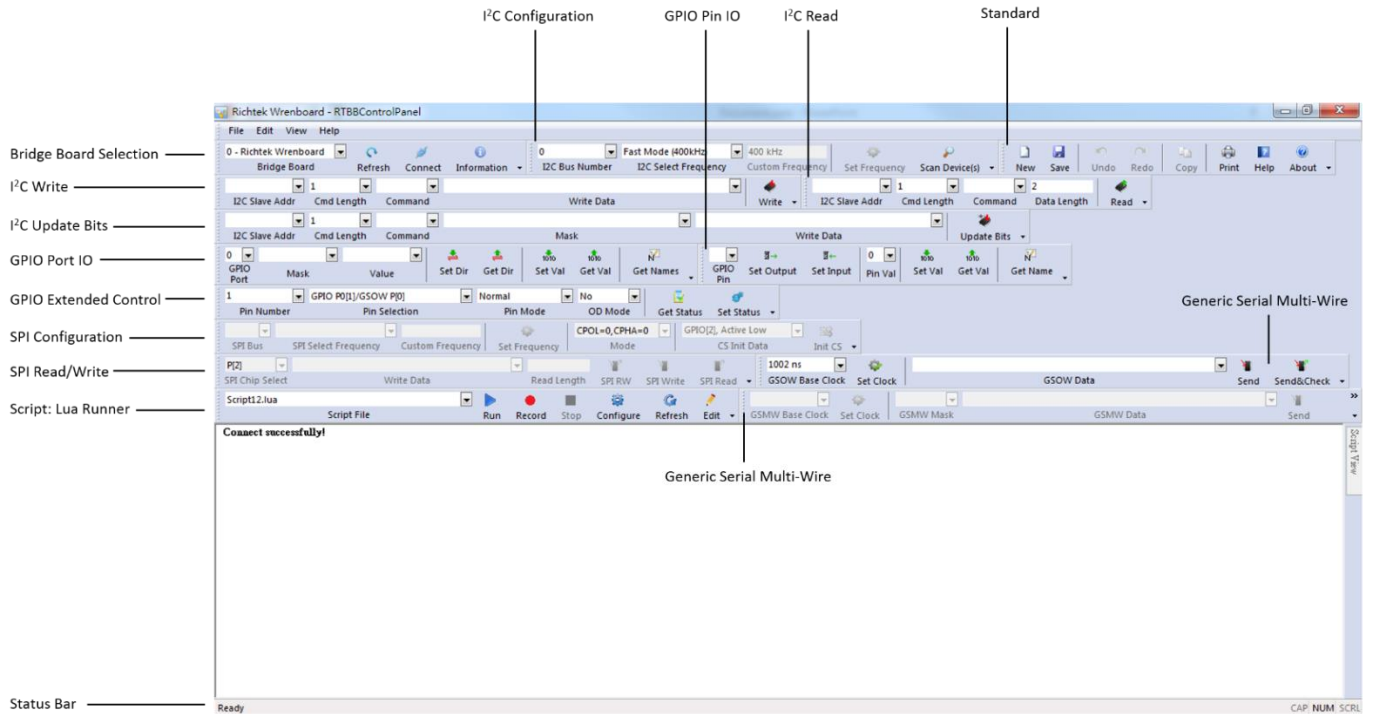
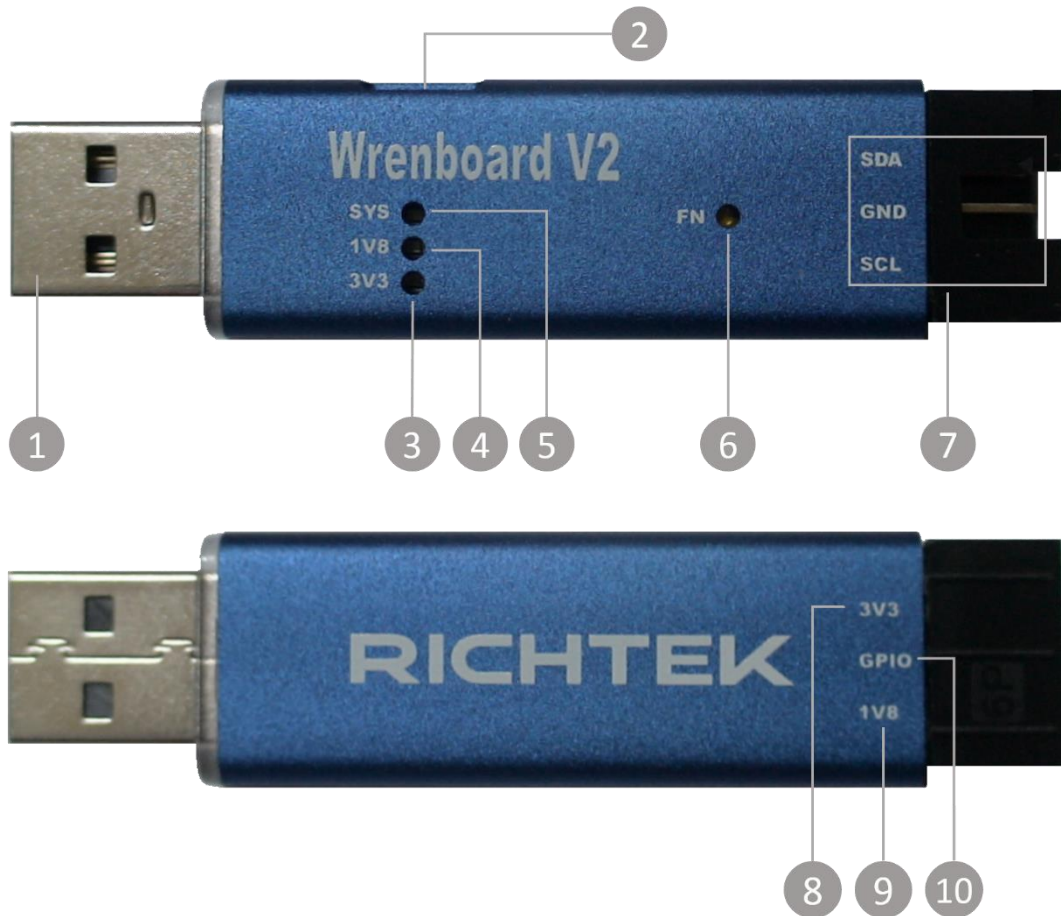


Figure 2. The GUI of Richtek Bridgeboard Control Panel

3. Hardware Description



- 1 Standard USB A plug

It can be connected to PC directly.

- 2 Micro-B USB port

It is an alternative to connect Wrenboard to PC when the long distance between Wrenboard and PC is needed.

- 3 I²C voltage LED

The Red LED indicates that the I²C pins are operated in 3.3V.

- 4 I²C voltage LED

The Blue LED indicates that the I²C pins are operated in 1.8V.

5 System LED

If the Wrenboard execute a command, the white LED will be switched on / off.

6 I²C voltage exchange / Firmware update button

- ◆ To exchange I²C voltage
Click FN button in normal operation mode, the I²C voltage will be exchanged between 3.3V and 1.8V level.
 - ◆ To enable firmware download mode
Connect Wrenboard to PC and press FN button. If the red and blue LEDs are blinking alternatively, it means firmware download mode is ready.
-

7 I²C and GND pins

- ◆ SCL (Serial Clock Line)
SCL is a serial clock line with a 2.7k Ω pull-up resistor. It is used to synchronize the data transfers on the I²C bus.
 - ◆ SDA (Serial Data Line)
SDA is a serial data line with a 2.7k Ω pull-up resistor. It is used to send data and address.
-

8 3.3V power pin

It is suggested to limit the output current within 100mA.

9 1.8V power pin

It is suggested to limit the output current within 100mA.

10 GPIO

The GPIO pin can be configured as GPIO (P0.1), 1-wire (GSOW) and PWM function according to programming setting. User can connect this pin to control device in either function.

4. Firmware Update

Step 1. Connect Wrenboard to PC

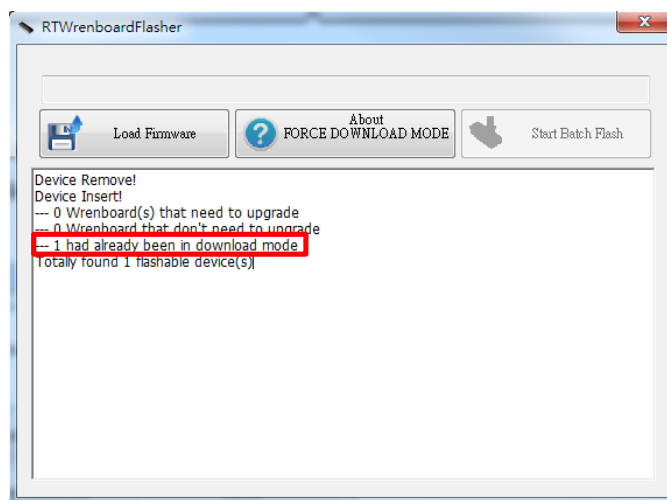
To avoid impacting the other device, please disconnect all available pins on the Wrenboard.

Step 2. Run Richtek Wrenboard Flasher

(Start > Richtek Technology Corporation > Richtek Bridgeboard Utilities > Firmware Update Tool > Richtek Wrenboard Flasher)

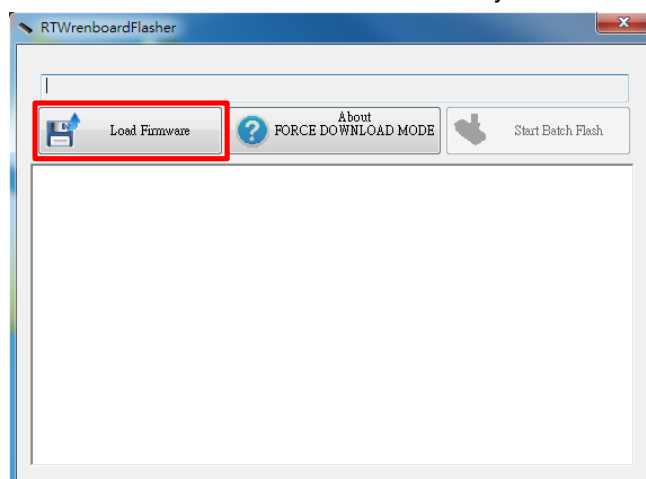
Step 3. Use force download mode if the firmware cannot operate normally. Otherwise go to Step 4.

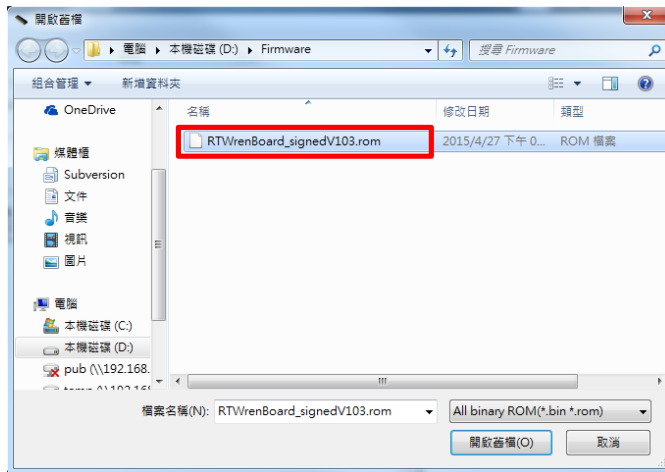
Press FN button until the red and blue LEDs are blinking alternatively.



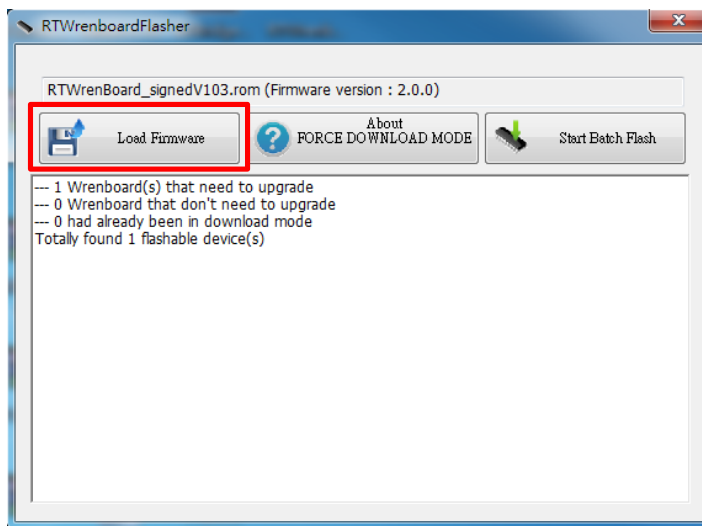
Step 4. Load firmware

Click "Load Firmware" and select the file you want to install on the Wrenboard.



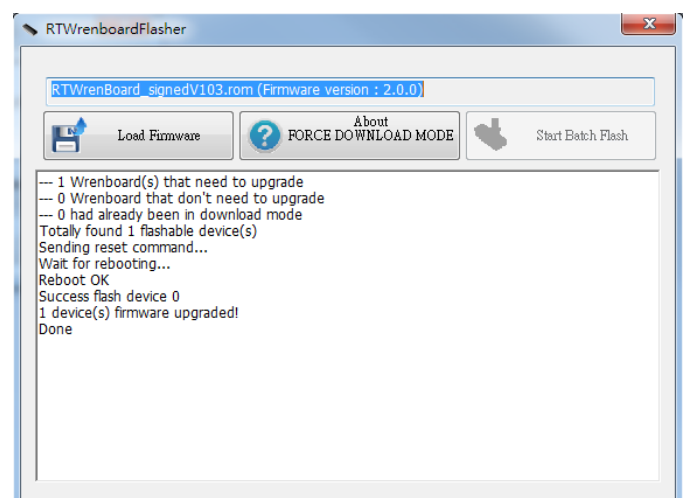
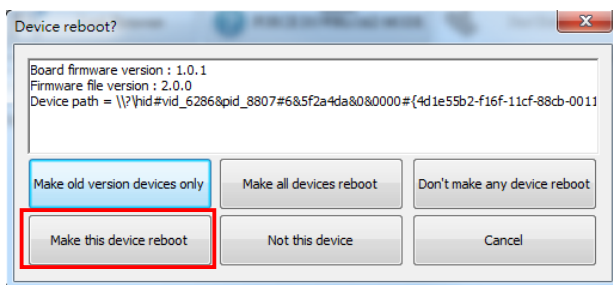


Step 5. Install firmware



Notes :

When user adopt auto update firmware tool for one Wrenboard, it may popup following message. It is suggested to click "Make this device reboot".



More Information

For more information, please find the related datasheet or application notes from Richtek website <http://www.richtek.com>.

Important Notice for Richtek Reference Design

THIS DOCUMENT IS FOR REFERENCE ONLY, NOTHING CONTAINED IN THIS DOCUMENT SHALL BE CONSTRUED AS RICHTEK'S WARRANTY, EXPRESS OR IMPLIED, UNDER CONTRACT, TORT OR STATUTORY, WITH RESPECT TO THE PRESENTATION HEREIN. IN NO EVENT SHALL RICHTEK BE LIABLE TO BUYER OR USER FOR ANY AND ALL DAMAGES INCLUDING WITHOUT LIMITATION TO DIRECT, INDIRECT, SPECIAL, PUNITIVE OR CONSEQUENTIAL DAMAGES.

Richtek Technology Corporation
14F, No. 8, Tai Yuen 1st Street, Chupei City
Hsinchu, Taiwan, R.O.C.
Tel: (8863)5526789

Window : RDC / SRD

Copyright © 2015 Richtek Technology Corporation. All rights reserved. **RICHTEK** is a registered trademark of Richtek Technology Corporation

RD0001-01_00 September 2015

www.richtek.com